



Warranty information
Operators manual
Installation instructions

FETERL

Rust Sales, Inc.

2964 164th Ave SE

Harwood, ND 58042

(800) 478-7801

(701) 282-9194

www.hopperwalker.com



Limited Warranty Statement

Rust Sales, Inc. warrants each new Hopper Walker to be free from defects in material and workmanship. This warranty is applicable only for the normal service life expectancy of the product or components, not to exceed 12 consecutive months from the date of the delivery of the Hopper Walker Product to the original purchaser, or the date the product is first put into service via a rental agreement or other means, whichever occurs first. This warranty coverage applies only to the original owner and is not transferable.

Under no circumstances will it cover any merchandise or components thereof, which in the opinion of the company has been subject to misuse, unauthorized modification, alterations, improper installation, maintenance, an accident or if repairs have been made with parts other than those obtained through Rust Sales, Inc.

Our obligation under this warranty shall be limited to repairing at our facility or replacing, free of charge to the original purchaser, any part that, in our judgment, shall show evidence of such defect, provided further that such part be returned within 30 days from the date of failure to Rust Sales, Inc. routed through the dealer from whom the purchase was made, transportation charges prepaid. Proof of purchase must also accompany the returning defective part.

This warranty shall not be interpreted to render Rust Sales, Inc. liable for injury or damages of any kind or nature to person or property. This warranty does not extend to the loss revenue, extra labor cost associated with downtime, substitute machinery, rental or for any other reason.

Except as set forth above, Rust Sales, Inc. shall have no obligation or liability of any kind on account of any of its equipment and shall not be liable for special or consequential damages. Rust Sales, Inc. makes no other warranty, express or implied, and specifically, Rust Sales, Inc. disclaims any implied warrant or merchantability or fitness for a particular purpose. Some states or provinces do not permit limitations or exclusions of implied warranties or incidental or consequential damages, so the limitations or exclusions in this warranty may not apply.

This warranty is subject to any existing conditions of supply which may directly affect our ability to obtain materials or manufacture replacement parts.

No one is authorized to alter, modify or enlarge this warranty nor the exclusion, limitations and reservations.

Rust Sales, Inc. reserves the right to make improvements in design or changes in specifications at any time, without incurring any obligation to owners of units previously sold.

SAFETY

The safety guidelines are not intended to replace any rules or regulations or any applicable local, state, or federal governing laws. The following information is intended to be used in conjunction with other rules or regulations already in existence. It is important to read all safety information before operating any wireless radio remote control system.

Only properly trained persons designated by management should be permitted to operate wireless radio controlled equipment. Wireless radio controlled equipment should not be operated by any person who cannot read or understand signs, notices and operating instructions that pertain to the equipment.

Wireless radio controlled equipment should not be operated by any person with insufficient eyesight or hearing or by any person who may be suffering from a disorder or illness or is taking any medication that may impair judgment or the ability to operate equipment.

Do not use this device during electrical storms or under conditions of electrical interference, due to the potential for equipment communication issues. Ensure transmitter batteries are in good condition and power for receiver is correct. Installation and maintenance should be done only while the controlled equipment main power and receiver's power are off and locked out to prevent electrical shock.

Any person operating wireless radio controlled equipment should possess the following knowledge and/or skills:

- *Knowledge of hazards peculiar to equipment operation
- *Knowledge of safety rules for radio controlled equipment
- *Knowledge of standard methods of hand and/or non-verbal signaling
- *Knowledge of the radio transmitter
- *Limit switch test procedure
- *Proper clearance of all moving parts on the radio controlled equipment
- *Proper storage space for radio control transmitter when not in use
- *Transferring radio control transmitter to another person
- *Reporting unsafe or unusual operating conditions
- *Remote controlled equipment capacity and limitations
- *Procedures for testing controlled equipment

Radio controlled operators should always position themselves for the best view of the equipment they are controlling. The equipment should never be operated blindly. The operator should always remain at a safe distance, without losing line of sight with the equipment.

Transmitter switches should never be mechanically blocked ON or OFF for any equipment motion. When not in use turn the transmitter off (STOP).

After daily operation, shut off main power. A secure storage space should be designated for the transmitter unit especially when not in use. This precaution is

intended to prevent unauthorized use of the equipment.

The equipment operator should keep all body parts away from any moving parts.

The equipment has been tested for correct operation before delivery from the factory. However, it must not be used in critical or hazardous operation where incorrect operation may cause personal or equipment damage. If the equipment fails to respond or behaves improperly, the equipment operator should NOT operate the equipment AND should notify his/her supervisor immediately. When serious conditions are noticed (conditions that make the equipment unsafe to operate), the equipment should be shut down immediately and the supervisor notified.

CAUTION

The receiver unit or relays are not rated as explosion proof. The receiver unit must not be installed or operated in explosive environments unless appropriate secondary enclosure measures are taken

WARNING

The unit must be wired to the correct voltage; failure to do so may damage the system.

**NOTE

*** IN AN EMERGENCY, PUSH “**STOP**” TO STOP RADIO REMOTE CONTROLLED EQUIPMENT.

Contact ***Rust Sales, Inc.*** with any questions or comments regarding the mounting or operation of the HOPPER WALKER.

Rust Sales, Inc.
2964 164th Ave SE, Harwood, ND 58042
(800) 478-7801 or (701) 282-9194

Thank you for purchasing the HOPPER WALKER.

First thing - Read and understand all owners manuals and safety guidelines for all parts included with the hopper walker. **When performing any maintenance or adjustments always disconnect the power source from the main control box.** When moving the hopper, you should always be in clear view of the hopper and the hopper path, so hopper will not hit anyone or anything. The motor used on this unit is powerful and should only be used by persons familiar and trained in the operations and functions of the power swing auger system. Keep children and other persons away from the swing hopper and all controls. Before using the hopper walker system, operators should understand the workings of the remote operations as well as the hard wired control box.

The remote hand held controller has six functions:

1. OFF BUTTON - used to stop movement and to de-energize the remotes transmitter. Once the remote OFF button has been pressed the remote will not be able to send a signal to the receiver and control box. If the OFF button on the remote was used you can only move the hopper with the hard wired control box. The remote will only function again after the ON button is pressed.

2. ON BUTTON - used to energize the remote transmitter and receiver. Once pressed the remote transmitter can send the signal to the receiver to accept commands. If pressed again, the work light will turn on. Press the ON button again to turn off the work light.

3. MANUAL LEFT - moves hopper left while button is pressed and held. Movement stops when the button is released. Press and hold button again and movement starts again.

4. MANUAL RIGHT - moves hopper right while button is pressed and held. Movement stops when the button is released. Press and hold the button again and movement starts again.

5. AUTOMATIC LEFT - moves hopper left automatically. When the button is pushed and released, the movement starts and continues automatically until the hopper reaches a predetermined limit switch stop, the OFF button is pressed, or any other button is pressed and released.

A. The remote system stays energized after the automatic movement stops from reaching the predetermined limit switch stops.

B. The start button will have to be pressed to re-energize the remote system if the stop button was used to stop the automatic movement.

C. The remote system stays energized when the manual left or manual right buttons are used to stop the automatic movement.

D. Auto Left cannot be activated again until Auto Right is activated.

**The remote is now ready for the next command.

6. AUTOMATIC RIGHT - moves hopper right automatically. When the button is pushed and released, the movement starts and continues automatically until the hopper reaches a predetermined limit switch stop, the OFF button is pressed, or any other button is pressed and released.

A. The remote system stays energized after the automatic movement stops from reaching the predetermined limit switch stops.

B. The start button will have to be pressed to re-energize the remote system if the stop button was used to stop the automatic movement.

C. The remote system stays energized when the manual left or manual right buttons are used to stop the automatic movement.

D. Auto Right cannot be activated again until Auto Left is activated.

**The remote is now ready for the next command.

****IMPORTANT****

1. The predetermined limit switch stops only stop the movement when the automatic left or automatic right buttons are used. The manual left and manual right buttons on the remotes or the hard wired control box, when pressed and held, will override the predetermined limit switch stops.
 2. Make sure the adjustable limit switch stops are removed when moving the hopper to the opposite side of the main auger. This ensures that nothing is broken during moving. The stops will have to be reset after the hopper has been moved to the opposite side.
 3. Limit switches must always be adjusted to ensure proper shut off when moving, using the automatic left and automatic right buttons.
- **** Use only the manual left and manual right buttons or the hard wired box buttons when moving the hopper over to the opposite side of auger. **Never use the automatic controls.**

HARD WIRED BOX

This is the box with the red emergency stop button and also a left and right control button. This box will be located on the motor mounting clamp.

The functions of this box:

- **Red Emergency Stop Button** - When button is pushed down, it stops any and all movement of the hopper. To stop movement, press down on top of the button.
To resume movement from right or left buttons on this box or the remote this button needs to be in the up position.
To place this button in the up position, twist and the button will pop up.
- **Joy Stick** – Hopper will move in the directions the joystick is moved.

IMPORTANT – Moving the joystick will override limit switch stops.

NOTICE: Just an example of a working demo- You push “AUTO LEFT” to place hopper under grain trailer. Hopper will stop at a predetermined point when the limit stop whisker comes in contact with the stop tab on the limit switch stop. If you need to continue to the left you would need to push and hold manual left to override auto stop and hopper would move more to the left. Be aware if you continue to the left at some point the whisker of the limit switch will slip over the stop tab on the limit stop. If this happens you will not have any automatic shut off of movement to the left until hopper is brought back to the right so the whisker can be repositioned again to the correct side of the stop tab.

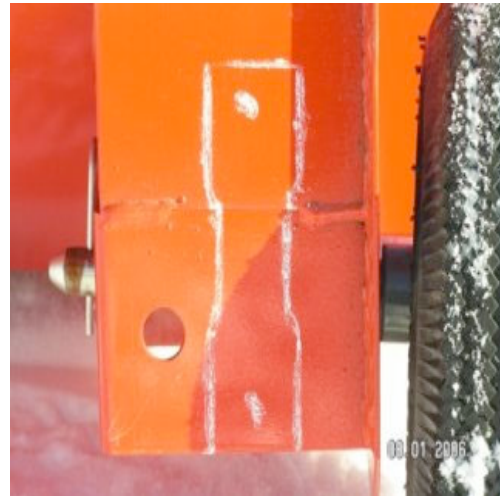
MOUNTING THE REMOTE SWING AUGER

If during the installation of the HOPPER WALKER you notice some parts missing or if you encounter difficulty mounting please contact **Rust Sales, Inc.** (800) 478-7801 or (701) 282-9194

Tools needed- allen wrench, 7/16-1/2-3/8 wrench-pop rivet tool some models.

The wheel and axle shaft assembly can be mounted on either side of the hopper. Pictures and instructions, used in this manual, are for mounting wheel and axle shaft assembly on the front side of the hopper with the hopper on the left side of main hopper (standing in front of auger and looking toward the main auger). If mounting on the right hand side, there are a few items to be aware of and they will be addressed as the time comes. Otherwise mounting is the same. If there is a certain side of the main auger which is normally used more, use that side for a starting point. If there isn't just use a side of your choice.

Lower the hopper to the ground. Block the hopper up off of the ground and remove the two existing wheels on the side of the hopper that you want to mount the drive wheels. Take the pillow block bearing assembly and hold them vertically and flush on the bottom of the wheel support side. Mark the holes then drill two 3/8" holes to mount each pillow block.



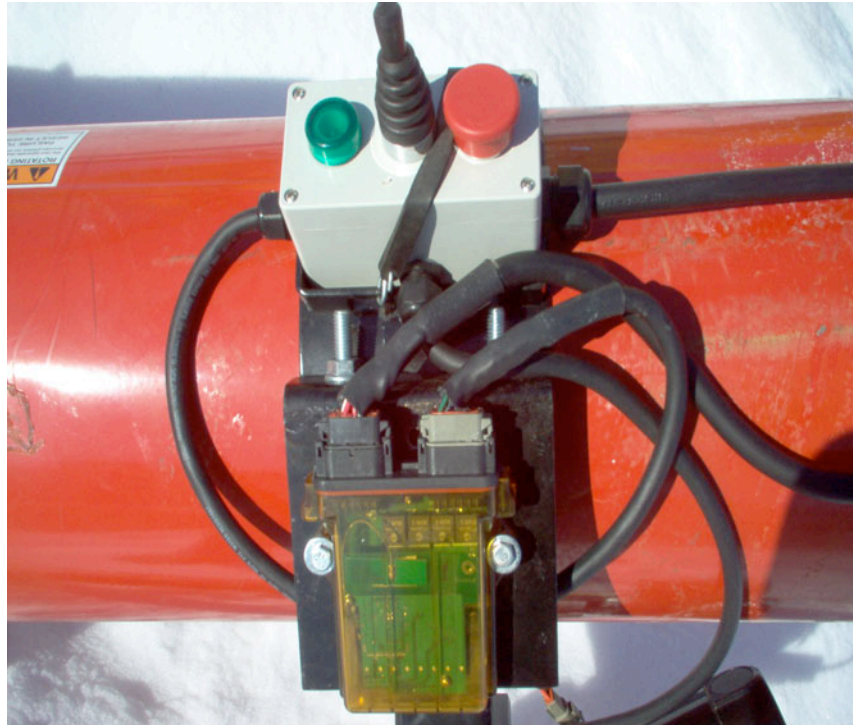
After getting holes drilled, mount pillow blocks with four 3/8 x 1-1/2" (you will use the 3/8" nuts with the welded extensions to secure the top bolts for the bearings.) and slide the axle shaft in to the bearings. Slide the hub and wheel assemblies on to the ends of the shaft. Position shaft so that the tires clear the hopper by 1" and leave 2-4" of shaft sticking past inside tire so the driveshaft can be mounted. Align wheel hub and shaft keyways, install 1/4" key and tighten both wheels to shaft. Tighten both bearings to axle shaft. Cut the yellow axle protector to fit between the 2 pillow block bearings and slip on to the shaft.



Place the motor mounting clamp around the auger tube approximately 15-20" from the intake of the hopper as shown in picture below. Use four 7/16" x 2" bolts to secure clamp to the auger tube.



Proper mounting of motor mount-- 15-20" from intake of hopper



Mount the controller plate to the top side of the motor clamp facing away from the joystick box using 7/16" x 2" bolts clamp bolts.

Mount the motor to the motor base with four 7/16" x 1" bolts. Make sure the junction box is facing up when mounting.

Install drive shaft assembly to the motor and axle shaft with keys. Tighten the set screws on the motor and axle shaft. Be certain that the drive shaft shield covers the drive shaft completely.



Complete motor and driveshaft and shield installed

MOUNTING CONTROL BOX

Mount the control box on the controller plate using two ¼" bolts, flat washers and nuts. Make sure the connectors on the controller are facing the joystick box. The beeper will also get mounted on the bottom of the controller plate to one of the ¼" bolts used to mount the controller.



MOUNT THE HARD WIRED CONTROL BOX

Place joystick box into cradle and secure with bungee cord. The long cable will lead up the swing tube. Connect the gray receiver connector to the gray receiver outlet on control box. Connect the beeper to the 2 pin connector on the same gray cable.

Connect the motor cord to the motor by removing the 4 screws and cover on the junction box. Remove strain relief connector nut (plastic nut on outside of junction box on motor) and slip it over the end of cord. Then push the cord through relief connector into junction box. Connect the black wire to one of the terminals in the green terminal block. Connect the white wire to the other terminal in the green terminal block. (See picture on next page) NOTE: If the motor moves in the opposite direction of the joystick, reverse the black and white wire in the green terminal block. Next tighten the relief connector nut securely over cord while holding the relief connector. Then replace cover on junction box.



Picture showing terminal block wiring on the motor.

The white wire will connect on the same side of each the green terminal block and the black terminal block.

The black wire will connect on the same side of each the green terminal block and the black terminal block.



Secure the hard wired control box with bungee cord as shown.

MOUNTING LIMIT SWITCHES AND HOLDERS

Where the swing hopper head rotates on the main auger boot, on either side is a pivot, this is where the limit switch holders will be mounted.



Picture showing where the limit switch holders will be placed on pivot ring. The holder will be centered over the factory pin that is used to pivot the swing tube on the pivot ring.



Picture showing position of location placement of holder on pivot ring. Leave 1/16" to 1/8" clearance between holder and tube of auger. Moving mounting out farther than 1/8" could make holder come in contact with factory hold down washers when swing hopper swings to the left or right.



Picture showing side view of limit switch mounting.

Weld the limit switch holder (on both sides) flat on the pivot ring centered over the factory pivot pin of the swing hopper. Attach the limit switches to the holders with 4 #10x 1 3/4" screws and nuts.

Repeat for the switch holder on the opposite side.

MOUNTING LIMIT SWITCH STOP BRACKETS AND LIMIT SWITCH STOPS

First mount the bracket that will be on the front of the boot. Center this bracket and position it on the front of the boot as shown in picture below.



Picture showing proper placement of front mounting bracket parallel with auger boot and lowered approximately 1/4" below welding.

Drill 2 ¼" holes on ends of bracket and through the side of the boot and use 2 ¼" x ¾" bolts and nuts to secure the bracket to the boot.

The limit switch stop used in this bracket will be the one with 2 stop tabs on it. Position this stop with the long tabs away from the auger.



Picture showing front stop with stop tabs away from boot.

The other two brackets will be placed on each side of the main auger boot. Position these brackets on the side of the boot parallel with the top, dropped down approximately ¼", starting 5"-6" from the front of the boot. Drill 2 ¼" holes on each end of bracket and through the side of boot and mount with 2 ¼"x ¾" bolts and nuts.



Picture showing proper position of side bracket on auger, 5"-6" from front of boot

Having a bracket on either side of the boot will allow you to use the automatic shut off system, no matter what side your swing hopper is on. You will only be using the front bracket and one side bracket, at any given time, while in operation. **If the other side limit stop is in operating position it may contact the swing hopper tube.**

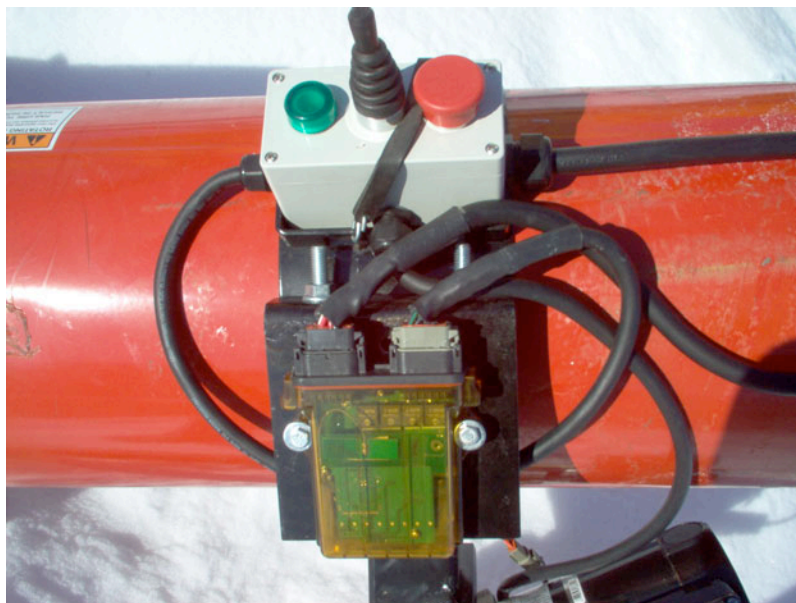
Attach the side limit switch stops on the side brackets with the tab towards the main auger and the long side of the tab away from auger boot.



Side stop with long tab away from boot

CAUTION -- TO PREVENT DAMAGE, ALWAYS REMOVE LIMIT SWITCH STOPS WHEN MOVING SWING HOPPER FROM ONE SIDE OF MAIN AUGER TO THE OTHER SIDE.

INSTALL LIMIT SWITCH/WORK LIGHT CABLE



Install limit switch/work light cable to the black connector on the controller. Run this cable along tube to the swing head on the auger. The 2 pin connectors are for the limit switches and the 3 pin is for the work light.



Test limit switches to make sure they are properly plugged in. If the hopper is on the left side of the auger, the limit switch on the left will stop the auto left function and the limit switch on the right will stop the auto right function. The green and white wired connector will connect to the right limit switch. The red and black wired connector will connect to the left limit switch. If they are opposite, switch the limit switch connections. The auger does not have to move in a full swing to test this. Simply engage the auto left/right and trip the limit switch with your hand.

Attach magnet to work light and place on top of swing head. Attach 3 pin connector.



Position of work light and cables. Make sure cables are securely fastened.

PLACEMENT OF INFORMATIONAL STICKERS



Place one each on the front of the auger boot.

IMPORTANT prevent limit switch damage

CAUTION to prevent damage keep switches adjusted

Place one each on both sides of the auger boot

IMPORTANT prevent limit switch damage

CAUTION to prevent damage keep switches adjusted





Install one each on both sides of swing tube centered from top to bottom

DANGER
Stay clear pinch point

Install one each on both sides of main auger tube approximately 3-4 feet from the beginning of the tube.

DANGER
Stay clear pinch point



Install one on each side and end of the swing hopper.

DANGER
Stay away auto movement may occur

POWERING UP CONTROL BOX

This system is designed to work with 12 volt **NEGATIVE** ground **ONLY**. ***DO NOT*** power the Hopper Walker using a 12 volt **POSTIVE GROUND** system; it will damage the Hopper Walker and may start a fire.

Run the included power wire to the battery on the tractor. The white lead is positive and black is ground. On tractors with two 6 volt batteries, attach the white lead to the starter solenoid. Plug the power cord into a 7 pin round outlet. The top pin in the plug should be the ground and the center pin should be power. Make sure cord is properly placed so that it does not get caught or pinched.

If the control box does not power up, check the fuse on the white wire at the battery and make sure the red stop button on the joystick box is in the up position.

SETTING LIMIT SWITCHES AND STOPS

IMPORTANT - Proper adjustment is critical for the limit switches to work properly to stop the movement of the hopper in automatic function from the remote.

With swing hopper in its 'home position' maintain 6" or more of clearance between swing hopper tube and main auger.



Swing hopper tube with 6" of clearance between main auger tube

First adjust the limit switch stop that will be used to stop the hopper, in its home

position. That will be the limit stop on either the left side or the right side of the main auger boot, depending upon which side you choose for the hopper. With the hopper still in its home position, slide the switch stop in the slot rearward (toward main auger) until the cross bar on the limit stop comes in contact with the whisker of the limit switch.

The cross bar should contact the whisker at least 1 1/4" or more. If the whisker does not contact the stop bar enough it will slip over the stop tab and the hopper will not stop. The whisker should also be close to centered horizontally on the stop tab. If for any reason these positions cannot be achieved with adjustment contact Rust Sales, Inc. immediately. Rust Sales, Inc. will not be responsible for any damage caused by improper adjustment of limit switches.

When adjusting the side stops, be aware if the stops are adjusted to high on the bracket, the inner stop tab may contact the limit switch holder as the hopper moves left or right.



Whisker catching stop tab at least 1 1/4" or more

IMPORTANT-- The point at which the swing hopper tube will come into contact with the main auger tube {home position} will vary depending upon the height of the main auger, so set limit switch stops accordingly.

Now move the hopper out (away) from main auger tube using the left or right hard wired control box buttons. When the hopper has reached a desired position adjust the front limit stop until it comes in contact with the whisker on the limit switch. Also adjust so the cross bar contacts at least 1 1/4" or more of the whisker and also whisker should be close to centered horizontally.

IMPORTANT--- When putting swing hopper from transport position to working position, and before using the auto function on the remote,

always make sure limit switch whiskers are on the correct side of the limit stops to properly stop movement of hopper.

***IMPORTANT--* When putting swing hopper into transportation position, in certain instances the outside edge of the swing hopper head may come in contact with the front limit stop. If this is the case the limit stop will have to be lowered or removed for transport. Always be sure to reset the limit stop properly before using.**

Testing your HOPPER WALKER

Now you are ready to test your HOPPER WALKER.

With everyone and everything clear of the path of the hopper, press “start” on the remote. A beeping sound should be heard momentarily, to inform you the remote control system is ready for a command. Standing in front of auger, but out of path of hopper, push the appropriate “auto” function button on remote to start movement of hopper. The hopper should move and automatically stop when the predetermined limits are reached. Be prepared to push stop or cut power in case the hopper does not stop when limits are reached. Make sure the limit stops are adjusted properly to ensure the hopper will stop. Run through the left and right sequence 5-10 times to make sure everything is adjusted, all hardware is tight and operating properly. Familiarize yourself and others, who will be operating the HOPPER WALKER, of the functions and features. Now you are ready to put the HOPPER WALKER to work.

Scheduled maintenance; periodically check all cords and connections for any damage or cuts. If any are found replace immediately.

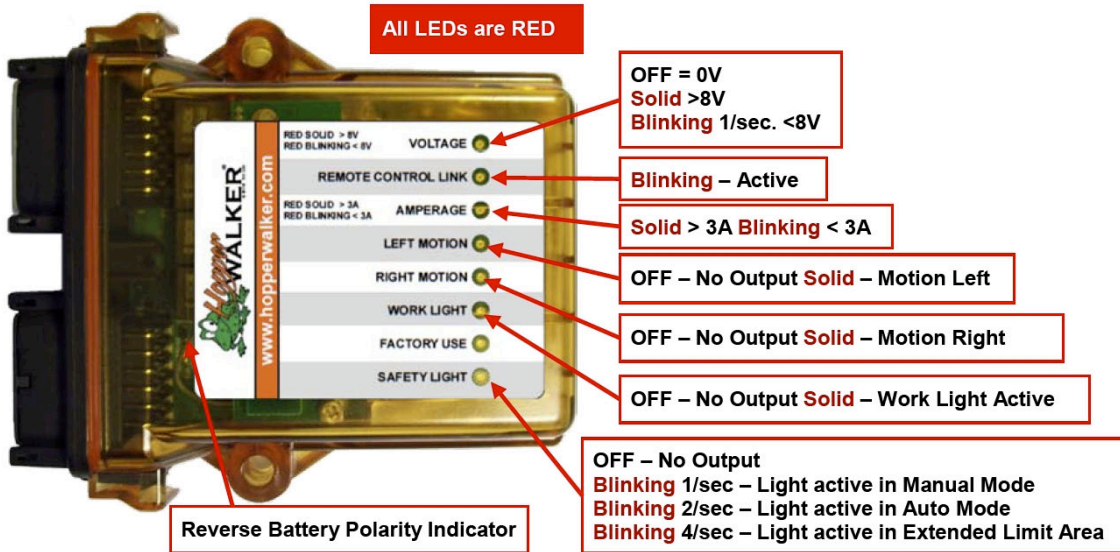
Check for any safety stickers that are not clearly visible to read. Replace any immediately

Lubricate 2 u joint assemblies on drive shaft every 10 hours of use. Use #2 grease.

Lubricate the 2 pillow block bearings every 10 hours of use. Use #2 grease.

Before putting HOPPER WALKER into service at the beginning of each season check to make sure all functions and stops are operating properly.

DIAGNOSTIC LED LIGHTS



The controller is equipped with diagnostic LED lights to aid with trouble-shooting. Please refer to the picture above for an explanation of the lights. If the reversed polarity LED is active, reverse the polarity of the battery cable on the tractor; it is not properly connected. White is positive and black is ground.

Handheld/Base Unit Association

Handheld/Base Unit Association is established using the following steps:

1. Remove power from the base unit.
2. Stand near the base unit in line of sight with the handheld in your hand.
3. Simultaneously press and hold the Association and Disassociation buttons. The TX LED lights steady green.
4. Continue to hold both buttons for the five seconds it takes for the LINK LED to begin flashing amber.
5. When the LINK LED flashes amber, release the two buttons. The RX LED flashes red allowing two (2) seconds for you to make the next button press.

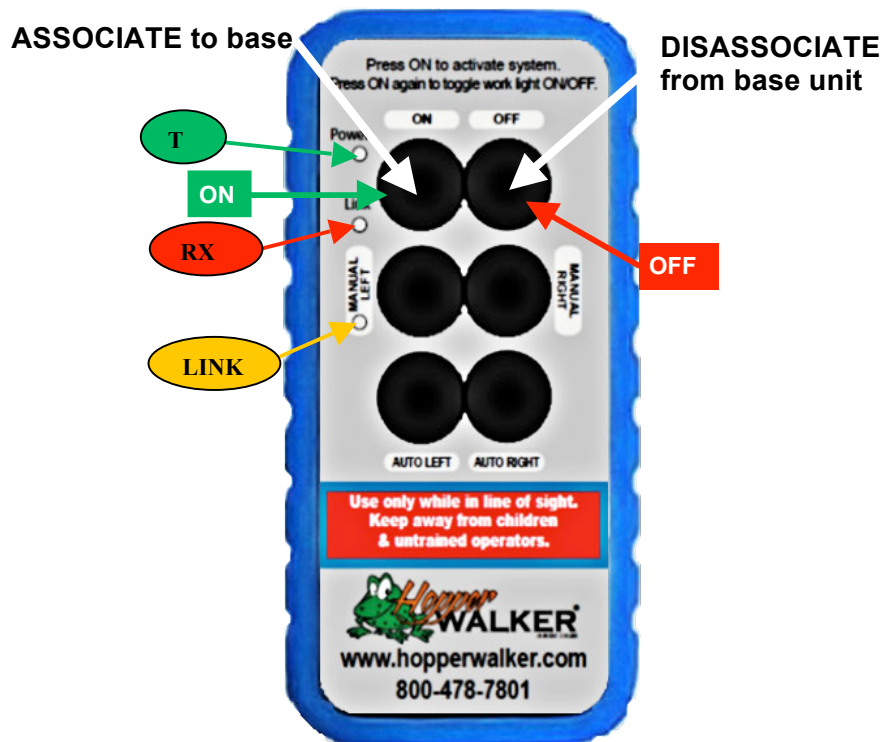
✓ **Note:** If the next button press is not performed within the two second interval that RX flashes red, the Association procedure is aborted and must be started anew to establish the communication link.

6. Press and hold the Association button. The RX LED extinguishes, the TX LED lights steady green, and the LINK LED lights steady amber.
7. Apply power to the base unit while continuing to hold the Association button.

The base unit and handheld begin to establish a communication link while the Association button is held. Once the process is complete, the amber LINK LED extinguishes, the RX LED begins flashing red, and the TX LED lights steady green and remains so until the Association button is released.

8. Release the Association button.

The RX LED extinguishes, the TX LED flashes green for a brief time and then it too goes out. The SmarT System is ready for use with that particular handheld remote.



Handheld/Base Unit Disassociation

In some circumstances it may become necessary to break the communication link, or disassociate a handheld and a base unit. The Disassociation procedure is almost identical to the Association procedure, except the Disassociation button is used and held throughout the process instead of the Association button.

CAUTION



Using the following steps will break all previously established handheld remote links. It will be necessary to perform the Association Procedure using each handheld to re-establish communication links with a base unit.

1. Remove power from the base unit.
2. Stand near the base unit in line of sight with the handheld in your hand.
3. Press and hold both the Association and Disassociation buttons. TX LED lights steady green.
4. Continue to hold both buttons for the five seconds it takes for the LINK LED to begin flashing amber.
5. When the LINK LED flashes amber, release both buttons. The RX LED flashes red allowing two (2) seconds for you to make the next button press.

✓ **Note:** *If the next button press is not performed within the two second interval that RX LED flashes red, the procedure is aborted and must be started anew to break the link.*

6. Press and hold the Disassociation button. The RX LED extinguishes, the TX LED lights steady green, and the LINK LED lights steady amber.
7. Apply power to the base unit while continuing to hold the Disassociate button.

The base unit and all previously linked handhelds begin to Disassociate communications links. Once the Disassociation is complete, the amber LINK LED extinguishes, the RX LED begins flashing red, and the TX LED lights steady green and remains so until the button is released.

8. Release the Disassociate button. The RX LED extinguishes, the TX LED flashes green for a brief time and then it too extinguishes.

The Hopper Walker base unit will not communicate with any handheld remote units. A handheld remote must use the Association Procedure to re-establish a communication link with the base unit.

Hopper Walker OO-206-HPW Handheld Remote

Application Specifics

The Hopper Walker OO-206-HPW Handheld Remote is intended only to be used to control the Hopper Walker BU-200H-HPW Base Unit.



ON Button (B1)

Turn On (Activate) the Handheld

The ON button activates the handheld and establishes a communication link with the base unit.

Work Light Control

The ON button is also a toggle switch for the work light when the system is active. Pushing the ON button when the system is active commands the work light to turn ON. When pressed again, the work light is commanded to turn OFF. As a toggle while the system is active, when pressed and released the handheld will send the command to switch the work light to the opposite condition of its current state. Note that this functionality does not apply when the system is in Auto Mode. In Auto Mode, the ON button becomes a stop function for movement of the Hopper Walker.

OFF Button (B2)

The OFF button turns the handheld off (deactivates the handheld). The communication link between the handheld and the BU-200H-HPW base unit is broken when the OFF button is pressed.

MANUAL LEFT Button (B3)

The MANUAL LEFT button is a momentary control where machine activity only occurs during the time the operator presses the button.

MANUAL RIGHT Button (B4)

The MANUAL RIGHT button is a momentary control where machine activity only occurs during the time the operator presses the button.

AUTO LEFT Button (B5)

The AUTO LEFT button is a latch control where the related base unit output remains engaged (ON) following the initial press and release of the AUTO LEFT button.

A subsequent press and release of any button disengages the related base unit outputs (OFF).

*If the Auto Left function is stopped by either the limit switch or any other button, Auto Left can not be activated again until the Auto Right button is activated.

AUTO RIGHT Button (B6)

The AUTO RIGHT button is a latch control where the related base unit output remains engaged (ON) following the initial press and release of the AUTO RIGHT button.

A subsequent press and release of any button disengages the related base unit outputs (OFF).

*If the Auto Right function is stopped by either the limit switch or any other button, Auto Right can not be activated again until the Auto Left button is activated.

AUTO Power Down

Auto power-down occurs after 20 minutes of button inactivity. Power is removed from the handheld and the communication link with the BU-200H-HPW base unit is broken.





Rust Sales, Inc.
2964 164th Ave SE
Harwood, ND 58042
(800) 478-7801
(701) 282-9194

www.hopperwalker.com